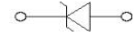
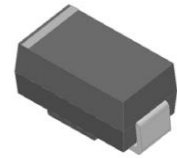


**Product: P4SMA Series**

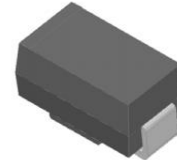
### Feature

- For surface mounted applications
- 400W peak pulse power capability on 10/1000µs waveform
- Low incremental surge resistance, excellent clamping capability
- Very fast response time
- High temperature soldering guaranteed: 265°C/10 seconds
- Component in accordance to RoHS

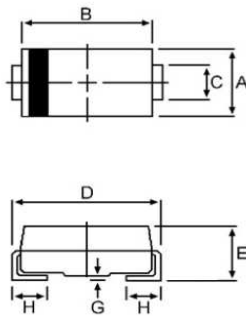
Uni-directional



Bi-directional



### Dimension Figure



Dimensions	Millimeters		Inches	
	Min	Max	Min	Max
A	2.20	2.80	0.866	0.110
B	3.90	4.50	0.154	0.177
C	1.25	1.70	0.049	0.067
D	4.70	5.30	0.185	0.207
E	1.90	2.50	0.075	0.098
G	-	0.203	-	0.008
H	0.75	1.55	0.030	0.061

### Maximum Ratings

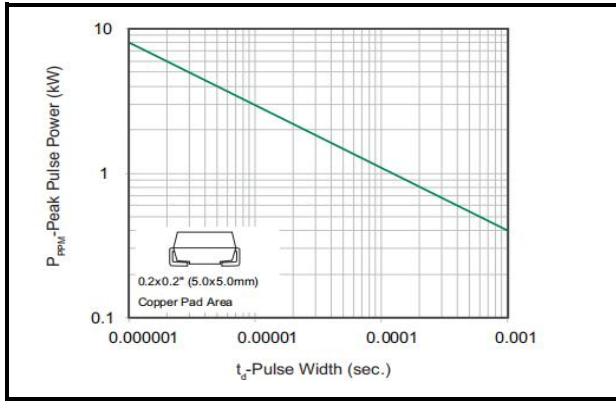
Parameter	Symbol	Value	Unit
Peak Pulse Power Dissipation at $T_A=25^{\circ}\text{C}$ by 10x1000µs waveform	$P_{PPM}$	400	W
Power Dissipation on infinite heat sink at $T_A=50^{\circ}\text{C}$	$P_{M(AV)}$	3.3	W
Peak Forward Surge Current, 8.3ms Single Half Sine Wave	$I_{FSM}$	40	A
Maximum Instantaneous Forward Voltage at 0.2A for Unidirectional	$V_F$	1.2	V
Operating Junction and Storage Temperature Range	$T_J, T_{STG}$	-55 to 150	$^{\circ}\text{C}$
Typical Thermal Resistance Junction to Lead	$R_{uJL}$	30	$^{\circ}\text{C/W}$
Typical Thermal Resistance Junction to Ambient	$R_{uJA}$	120	$^{\circ}\text{C/W}$

## Electrical Characteristics

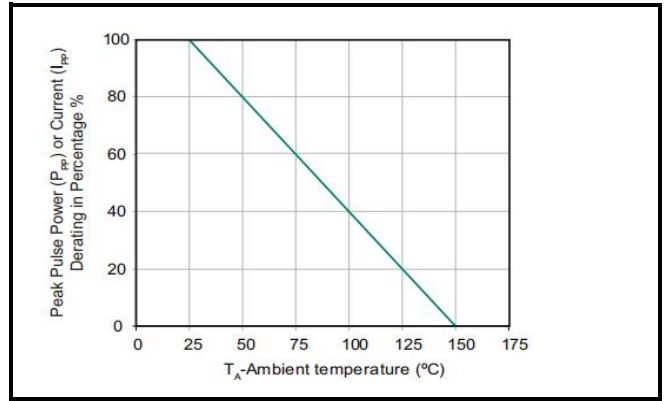
P/N		Marking		VR (V)	VBR @ IT (V)		IT (mA)	IR@ VR ( $\mu$ A)		Ipp (A)	VC@ Ipp (V)
Uni	Bi	Uni	Bi		MIN	MAX		Uni	Bi		
P4SMA6.8A	P4SMA6.8CA	6V8A	6V8C	5.8	6.45	7.14	10	100	200	39.0	10.5
P4SMA7.5A	P4SMA7.5CA	7V5A	7V5C	6.4	7.13	7.88	10	100	200	36.3	11.3
P4SMA8.2A	P4SMA8.2CA	8V2A	8V2C	7.02	7.79	8.61	10	50	80	33.9	12.1
P4SMA9.1A	P4SMA9.1CA	9V1A	9V1C	7.78	8.65	9.55	1	3	30	30.6	13.4
P4SMA10A	P4SMA10CA	10A	10C	8.55	9.5	10.5	1	2	8	28.3	14.5
P4SMA11A	P4SMA11CA	11A	11C	9.4	10.5	11.6	1	1	2	26.3	15.6
P4SMA12A	P4SMA12CA	12A	12C	10.2	11.4	12.6	1	1.0	1.0	24.6	16.7
P4SMA13A	P4SMA13CA	13A	13C	11.1	12.4	13.7	1	1.0	1.0	22.5	18.2
P4SMA15A	P4SMA15CA	15A	15C	12.8	14.3	15.8	1	1.0	1.0	19.3	21.2
P4SMA16A	P4SMA16CA	16A	16C	13.6	15.2	16.8	1	1.0	1.0	18.2	22.5
P4SMA18A	P4SMA18CA	18A	18C	15.3	17.1	18.9	1	1.0	1.0	16.1	25.5
P4SMA20A	P4SMA20CA	20A	20C	17.1	19	21	1	1.0	1.0	14.8	27.7
P4SMA22A	P4SMA22CA	22A	22C	18.8	20.9	23.1	1	1.0	1.0	13.4	30.6
P4SMA24A	P4SMA24CA	24A	24C	20.5	22.8	25.2	1	1.0	1.0	12.3	33.2
P4SMA27A	P4SMA27CA	27A	27C	23.1	25.7	28.4	1	1.0	1.0	10.9	37.5
P4SMA30A	P4SMA30CA	30A	30C	25.6	28.5	31.5	1	1.0	1.0	9.9	41.4
P4SMA33A	P4SMA33CA	33A	33C	28.2	31.4	34.7	1	1.0	1.0	9.0	45.7
P4SMA36A	P4SMA36CA	36A	36C	30.8	34.2	37.8	1	1.0	1.0	8.2	49.9
P4SMA39A	P4SMA39CA	39A	39C	33.3	37.1	41	1	1.0	1.0	7.6	53.9
P4SMA43A	P4SMA43CA	43A	43C	36.8	40.9	45.2	1	1.0	1.0	6.9	59.3
P4SMA47A	P4SMA47CA	47A	47C	40.2	44.7	49.4	1	1.0	1.0	6.3	64.8
P4SMA51A	P4SMA51CA	51A	51C	43.6	48.5	53.6	1	1.0	1.0	5.8	70.1
P4SMA56A	P4SMA56CA	56A	56C	47.8	53.2	58.8	1	1.0	1.0	5.3	77
P4SMA62A	P4SMA62CA	62A	62C	53	58.9	65.1	1	1.0	1.0	4.8	85
P4SMA68A	P4SMA68CA	68A	68C	58.1	64.6	71.4	1	1.0	1.0	4.5	92
P4SMA75A	P4SMA75CA	75A	75C	64.1	71.3	78.8	1	1.0	1.0	4.0	103
P4SMA82A	P4SMA82CA	82A	82C	70.1	77.9	86.1	1	1.0	1.0	3.6	113
P4SMA91A	P4SMA91CA	91A	91C	77.8	86.5	95.5	1	1.0	1.0	3.3	125
P4SMA100A	P4SMA100CA	100A	100C	85.5	95	105	1	1.0	1.0	3.0	137
P4SMA110A	P4SMA110CA	110A	110C	94	105	116	1	1.0	1.0	2.7	152
P4SMA120A	P4SMA120CA	120A	120C	102	114	126	1	1.0	1.0	2.5	165
P4SMA130A	P4SMA130CA	130A	130C	111	124	137	1	1.0	1.0	2.3	179
P4SMA150A	P4SMA150CA	150A	150C	128	143	158	1	1.0	1.0	2.0	207
P4SMA160A	P4SMA160CA	160A	160C	136	152	168	1	1.0	1.0	1.9	219
P4SMA170A	P4SMA170CA	170A	170C	145	162	179	1	1.0	1.0	1.8	234
P4SMA180A	P4SMA180CA	180A	180C	154	171	189	1	1.0	1.0	1.7	246
P4SMA200A	P4SMA200CA	200A	200C	171	190	210	1	1.0	1.0	1.5	274
P4SMA220A	P4SMA220CA	220A	220C	185	209	231	1	1.0	1.0	1.3	328
P4SMA250A	P4SMA250CA	250A	250C	214	237	263	1	1.0	1.0	1.2	344
P4SMA300A	P4SMA300CA	300A	300C	256	285	315	1	1.0	1.0	1.0	414
P4SMA350A	P4SMA350CA	350A	350C	300	332	368	1	1.0	1.0	0.9	482
P4SMA400A	P4SMA400CA	400A	400C	342	380	420	1	1.0	1.0	0.8	548
P4SMA440A	P4SMA440CA	440A	440C	376	418	462	1	1.0	1.0	0.7	602
P4SMA480A	P4SMA480CA	480A	480C	408	456	504	1	1.0	1.0	0.6	658
P4SMA510A	P4SMA510CA	510A	510C	434	485	535	1	1.0	1.0	0.6	698
P4SMA530A	P4SMA530CA	530A	530C	477	503.5	556.5	1	1.0	1.0	0.6	725
P4SMA540A	P4SMA540CA	540A	540C	486	513	567	1	1.0	1.0	0.5	740
P4SMA550A	P4SMA550CA	550A	550C	495	522.5	577.5	1	1.0	1.0	0.5	760

**Ratings and Characteristic Curves (TA=25°C unless otherwise noted)**

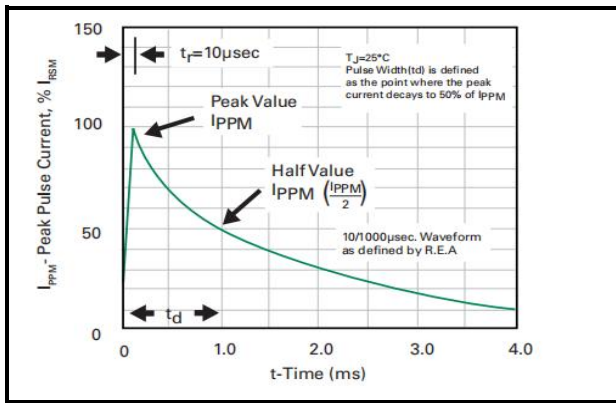
**Figure 1 - Peak Pulse Power Rating Curve**



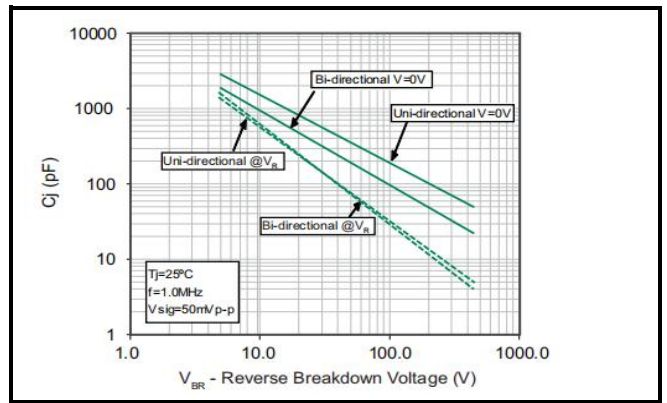
**Figure 2 - Pulse Derating Curve**



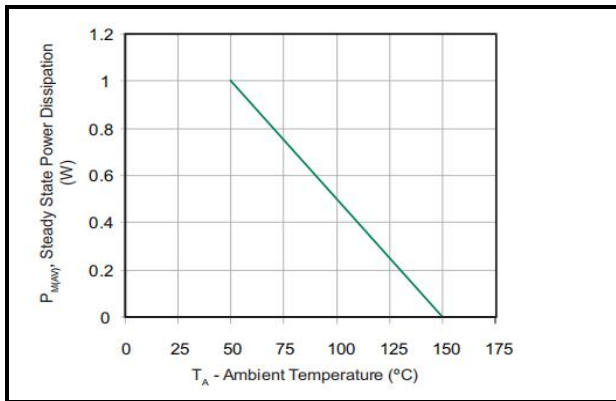
**Figure 3 - Pulse Waveform**



**Figure 4 - Typical Junction Capacitance**



**Figure 5 - Steady State Power Dissipation Derating Curve**



**Figure 6 - Maximum Non-Repetitive Forward Surge Current Uni-Directional Only**



## Notice

MOSPEC reserves the rights to make changes of the content herein the document anytime without notification. MOSPEC or anyone on its behalf, assumes no responsibility or liability for any errors or inaccuracies. Please refer to MOSPEC website for the last document.

MOSPEC disclaims any and all liability arising out of the application or use of any product including damages incidentally and consequentially incurred.

Application shown on the herein document are examples of standard use and operation. Customers are responsible for comprehending suitable use in particular applications. MOSPEC makes no representation or warranty that such application will be suitable for the specified use without further testing or modification.

The information contained herein is presented only as a guide for the applications of our products. No responsibility is assumed by MOSPEC for any infringements of patents or other rights of the third parties which may result from its use. No license is granted by implication or otherwise under any patent or patent rights of MOSPEC or others.

These MOSPEC products are intended for usage in general electronic equipment. Please make sure to consult with MOSPEC before you use these MOSPEC products in equipment which require specialized quality and/or reliability, and in equipment which could have major impact to the welfare of human life ( atomic energy control, aeronautics , traffic control, combustion control, safety devices etc.)