

V_{RRM}	1200V
I_F	20A/40A($T_C=158^{\circ}C$)
Q_C	98/196nC

1200V SILICON CARBIDE
SCHOTTKY DIODE

◇ Features

- Negligible reverse recovery
- High-speed switching
- Positive Temperature Coefficient
- Temperature-Independent Switching
- RoHS compliant



◇ Benefits

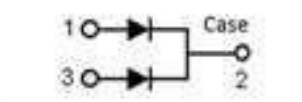
- Higher frequency
- Low heat dissipation requirements
- Reduce size and cost of the system
- High-reliability



TO-247AB

◇ Applications

- Switch mode power supply
- Solar inverter
- Data Center
- Uninterruptible power supply



Maximum Ratings (Tc=25°C unless otherwise noted)

Symbol	Parameter		Value (leg/device)	Unit	Note
V _{RRM}	Repetitive peak reverse voltage		1200	V	
I _F	Continuous forward current	Tc=25°C	71 / 142	A	Figure 3
		Tc=135°C	34 / 68	A	
		Tc=158°C	20 / 40	A	
I _{FSM}	Non-repetitive forward surge current	Tc=25°C, t _p =10ms, Half sine pulse	110 / 220	A	
		Tc=110°C, t _p =10ms, Half sine pulse	88 / 176	A	
I _{FRM}	Repetitive Peak Forward Surge Current	Tc=25°C, t _p =10ms, Half sine pulse	98 / 196	A	
		Tc=110°C, t _p =10ms, Half sine pulse	82 / 164	A	
∫i ² dt	i ² t value	Tc=25°C, t _p =10ms	60 / 242	A ² S	
		Tc=110°C, t _p =10ms	38 / 154	A ² S	
P _{tot}	Power Dissipation	Tc=25°C	308 / 616	W	Figure 4
		Tc=110°C	133 / 266	W	
		Tc=150°C	51 / 102	W	
T _j , T _{stg}	Operating and Storage Temperature		-55 to +175	°C	

Electrical Characteristics (Tc=25°C unless otherwise noted) (Per Leg)

Symbol	Parameter	Test Conditions	Value			Unit	Note
			Min.	Typ.	Max.		
V _{DC}	DC blocking voltage		1200	-	-	V	
V _F	Forward voltage	I _F =10A	-	1.22	-	V	Figure 1
		I _F =20A, Tc=25°C	-	1.45	1.7	V	
		I _F =20A, Tc=150°C	-	1.8	-	V	
		I _F =20A, Tc=175°C	-	1.9	-	V	
I _R	Reverse current	V _R =1200V, Tc=25°C	-	2	150	uA	Figure 2
		V _R =1200V, Tc=150°C	-	110	-	uA	
		V _R =1200V, Tc=175°C	-	160	-	uA	
Q _C	Total capacitive charge	V _R =800V	-	98	-	nC	Figure 6
C	Total capacitance	V _R =1V, f=1MHZ	-	1100	-	pF	Figure 5
		V _R =400V, f=1MHZ	-	92	-	pF	
		V _R =800V, f=1MHZ	-	78	-	pF	
E _C	Capacitance Stored Energy	V _R =800V	-	30	-	uJ	Figure 7

Thermal Characteristics (Per Leg)

Symbol	Parameter	Value		Unit	Note
		Typ.	Max.		
R _{th(j-c)}	Thermal resistance (Junction to case)	0.486	-	°C/W	Figure 8

Electrical Characteristic Curves (Per Leg)

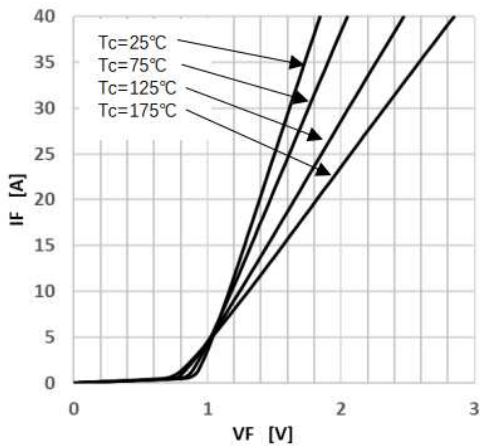


Figure 1 Forward Characteristics

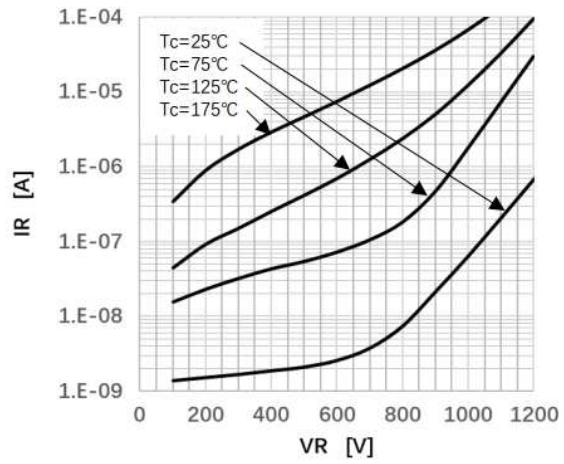


Figure 2 Reverse Characteristics

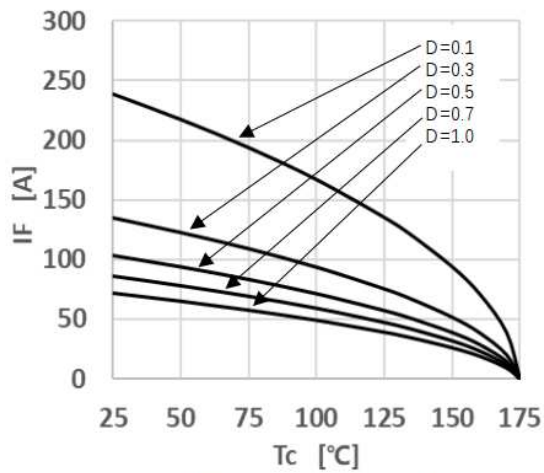


Figure 3 Peak Forward Current Derating

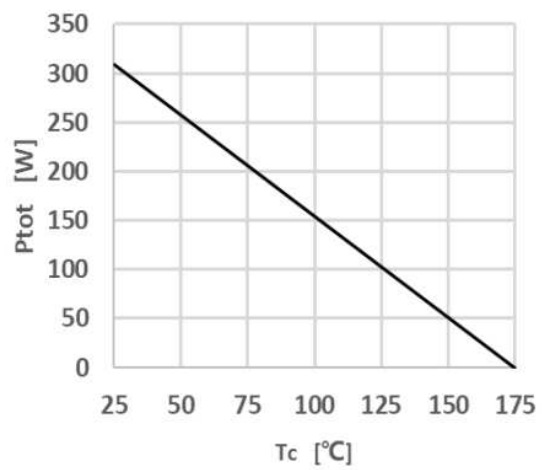


Figure 4 Power Dissipation

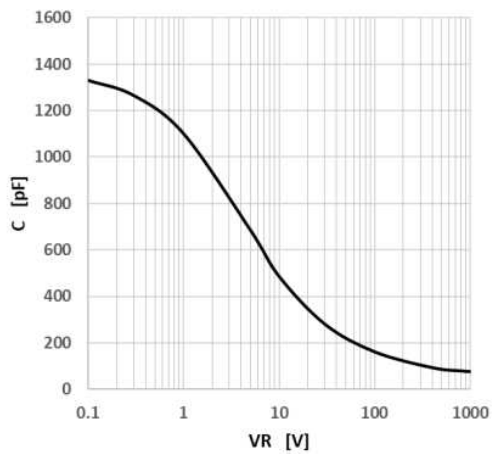


Figure 5 Capacitance vs. Reverse Voltage

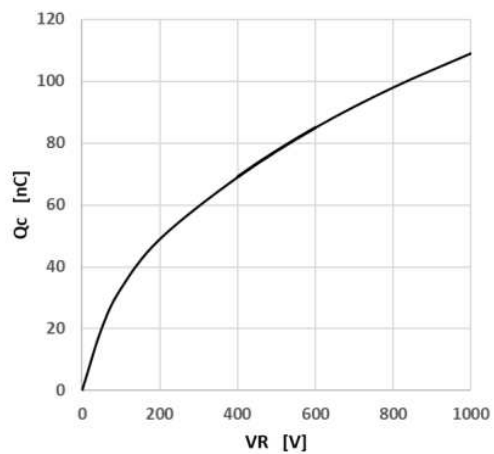


Figure 6 Capacitance Charge vs. Reverse Voltage

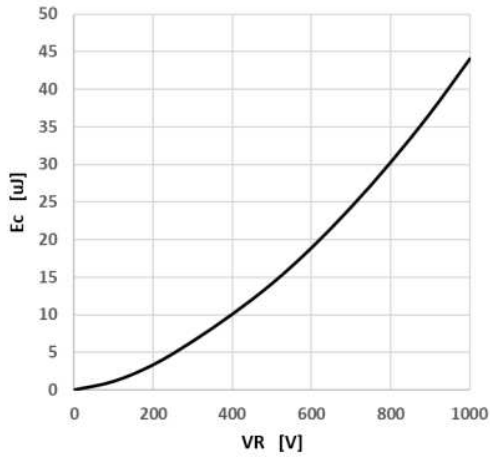


Figure 7 Capacitance Stored Energy

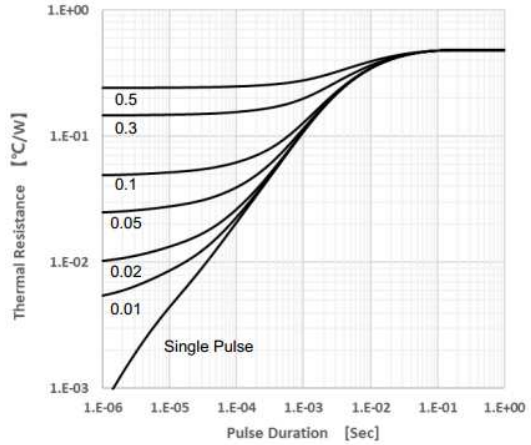
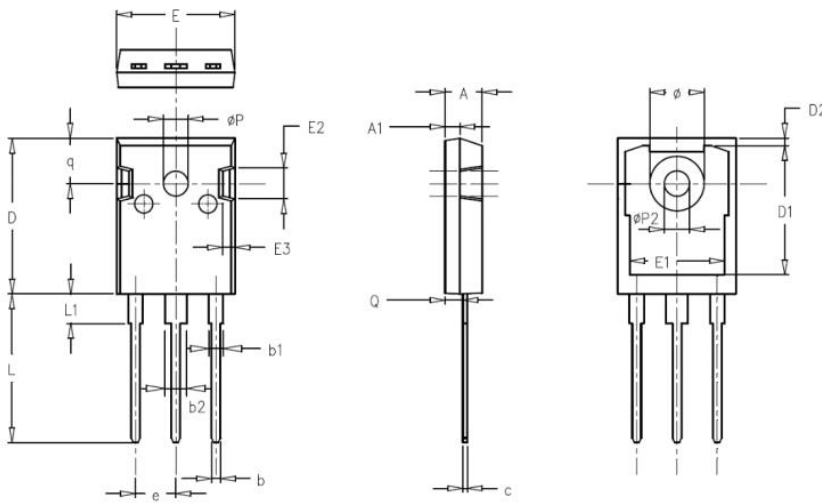


Figure 8 Transient Thermal Impedance

TO-247AB Package Dimensions : (Unit : mm)



SYMBOL	MILLIMETERS			NOTES	SYMBOL	MILLIMETERS			NOTES
	Normal	MIN.	MAX.			Normal	MIN.	MAX.	
A	4.98	4.68	5.36		phi P	3.66	3.45	3.85	
A1	1.99	1.90	2.10		e	5.44	BSC		
Q	2.41	2.30	2.60		q	6.24	5.99	6.58	
c	0.60	0.48	0.72		phi P2	3.45	3.24	3.64	
b	1.20	1.00	1.40		phi	7.14	7.10	7.30	
b1	2.07	1.90	2.30		D1	16.56	16.10	17.10	
b2	3.07	2.90	3.30		D2	0.98	0.80	1.36	
D	21.10	20.80	21.80		E1	13.30	13.00	13.52	
E	15.98	15.38	16.20		E2	5.64	5.10	6.10	
L	20.28	19.50	20.50		E3	2.33	1.90	2.70	
L1	4.01	3.75	4.35						

Notice

MOSPEC reserves the rights to make changes of the content herein the document anytime without notification. MOSPEC or anyone on its behalf, assumes no responsibility or liability for any errors or inaccuracies. Please refer to MOSPEC website for the last document.

MOSPEC disclaims any and all liability arising out of the application or use of any product including damages incidentally and consequentially incurred.

Application shown on the herein document are examples of standard use and operation. Customers are responsible for comprehending suitable use in particular applications. MOSPEC makes no representation or warranty that such application will be suitable for the specified use without further testing or modification.

The information contained herein is presented only as a guide for the applications of our products. No responsibility is assumed by MOSPEC for any infringements of patents or other rights of the third parties which may result from its use. No license is granted by implication or otherwise under any patent or patent rights of MOSPEC or others.

These MOSPEC products are intended for usage in general electronic equipment. Please make sure to consult with MOSPEC before you use these MOSPEC products in equipment which require specialized quality and/or reliability, and in equipment which could have major impact to the welfare of human life (atomic energy control, aeronautics , traffic control, combustion control, safety devices etc.)