

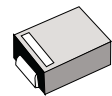
**Surface Mount
High Efficiency Power Rectifiers**

Ideally suited for high voltage, high frequency rectification, or as free wheeling and protection diodes in surface mount applications where compact size and weight are critical to the system.

- * Low Power Loss, High efficiency
- * Glass Passivated chips junction
- * 150 °C Operating Junction Temperature
- * Low Stored Charge Majority Carrier Conduction
- * Low Forward Voltage Drop , High Current Capability
- * High-Switching Speed 50 & 75 Nanosecond Recovery Time
- * Small Compact Surface Mountable Package with J-Bend Lead
- * Plastic Material used Carries Underwriters Laboratory Flammability Classification 94V-0

**HIGH EFFICIENCY
RECTIFIERS**

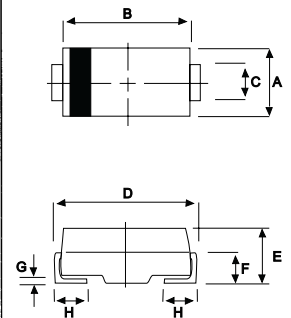
**1.0 AMPERES
50 -- 400 VOLTS**



DO-214AA(SMB)

MAXIMUM RATINGS

| Characteristic | Symbol | MH11 | MH12 | MH13 | MH14 | MH15 | Unit |
|--|---------------------------------|---------------|------|------|------|------|------|
| Peak Repetitive Reverse Voltage Working Peak Reverse Voltage DC Blocking Voltage | V_{RRM} V_{RWM} V_R | 50 | 100 | 200 | 300 | 400 | V |
| RMS Reverse Voltage | $V_{R(RMS)}$ | 35 | 70 | 140 | 210 | 280 | V |
| Average Rectifier Forward Current | I_o | 1.0 | | | | | A |
| Non-Repetitive Peak Surge Current (Surge applied at rate load conditions halfwave, single phase, 60Hz) | I_{FSM} | 30 | | | | | A |
| Operating and Storage Junction Temperature Range | T_J, T_{stg} | - 65 to + 150 | | | | | °C |



| DIM | MILLIMETERS | |
|-----|-------------|------|
| | MIN | MAX |
| A | 3.30 | 3.90 |
| B | 4.20 | 4.60 |
| C | 1.80 | 2.20 |
| D | 4.90 | 5.60 |
| E | 1.90 | 2.50 |
| F | --- | 1.30 |
| G | --- | 0.22 |
| H | 0.85 | 1.45 |

ELECTRICAL CHARACTERISTICS

| Characteristic | Symbol | MH11 | MH12 | MH13 | MH14 | MH15 | Unit |
|---|----------|-----------|------|------|------|------|------|
| Maximum Instantaneous Forward Voltage ($I_F=1.0$ Amp, $T_c = 25$ °C) | V_F | 1.00 | | 1.30 | | | V |
| Maximum Instantaneous Reverse Current (Rated DC Voltage, $T_c = 25$ °C) (Rated DC Voltage, $T_c = 125$ °C) | I_R | 5.0 50 | | | | | uA |
| Reverse Recovery Time ($I_F = 0.5$ A, $I_R = 1.0$, $I_{rr} = 0.25$ A) | T_{rr} | 50 | | | 75 | | ns |
| Typical Junction Capacitance (Reverse Voltage of 4 volts & f=1 MHz) | C_p | 25 | | | 20 | | pF |

CASE---
Transfer molded
plastic

POLARITY---
Cathode indicated
polarity band

MH11 Thru MH15

FIG-1 TYPICAL FORWARD CHARACTERISTICS

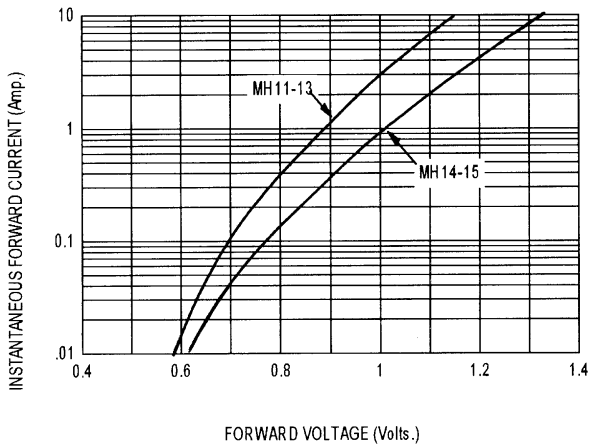


FIG-3 FORWARD CURRENT DERATING CURVE

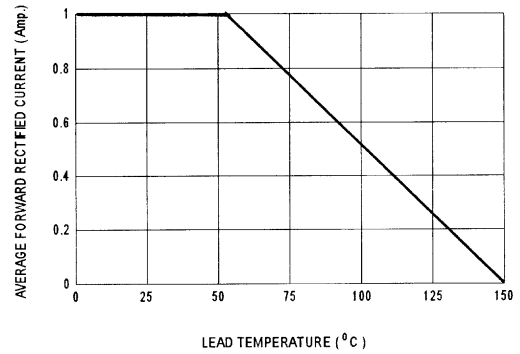


FIG-2 TYPICAL REVERSE CHARACTERISTICS

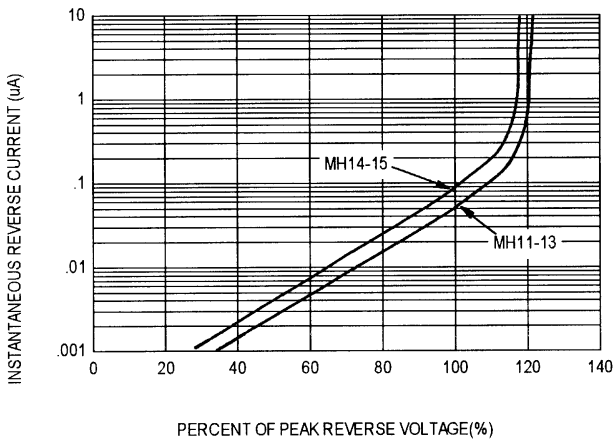


FIG-4 TYPICAL JUNCTION CAPACITANCE

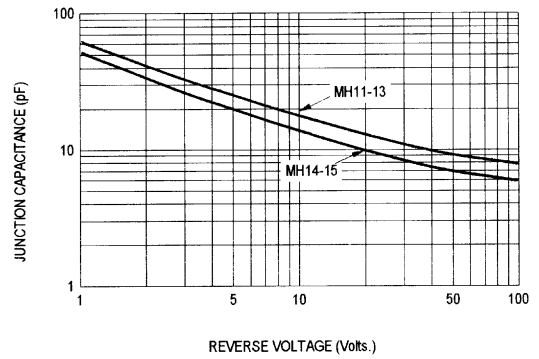
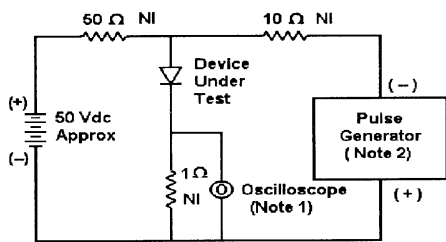
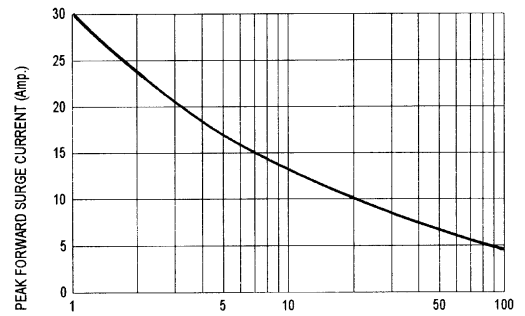
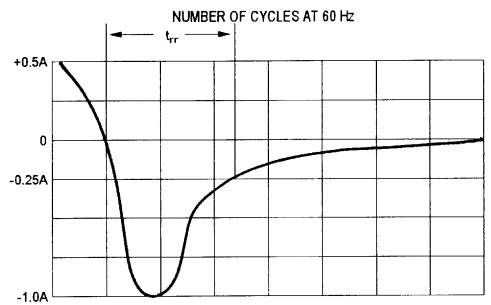


FIG-5 PEAK FORWARD SURGE CURRENT



- Notes:
 1. Rise Time = 7 ns max. Input Impedance = 1 M Ω, 22 pF
 2. Rise Time = 10 ns max. Input Impedance = 50 Ω



Set time base for 20 ns/cm

Fig-6 Reverse Recovery Time Characteristic and Test Circuit Diagram

Notice

MOSPEC reserves the rights to make changes of the content herein the document anytime without notification. MOSPEC or anyone on its behalf, assumes no responsibility or liability for any errors or inaccuracies. Please refer to MOSPEC website for the last document.

MOSPEC disclaims any and all liability arising out of the application or use of any product including damages incidentally and consequentially incurred.

Application shown on the herein document are examples of standard use and operation. Customers are responsible for comprehending suitable use in particular applications. MOSPEC makes no representation or warranty that such application will be suitable for the specified use without further testing or modification.

The information contained herein is presented only as a guide for the applications of our products. No responsibility is assumed by MOSPEC for any infringements of patents or other rights of the third parties which may result from its use. No license is granted by implication or otherwise under any patent or patent rights of MOSPEC or others.

These MOSPEC products are intended for usage in general electronic equipment. Please make sure to consult with MOSPEC before you use these MOSPEC products in equipment which require specialized quality and/or reliability, and in equipment which could have major impact to the welfare of human life (atomic energy control, aeronautics , traffic control, combustion control, safety devices etc.)