

### Switchmode Power Rectifiers

... Designed for use in switching power supplies, inverters and as free wheeling diodes. These state-of-the-art devices have the following features:

- \* High Surge Capacity
- \* Low Power Loss, High efficiency
- \* Glass Passivated chip junctions
- \* 150 °C Operating Junction Temperature
- \* Low Stored Charge Majority Carrier Conduction
- \* Low Forward Voltage, High Current Capability
- \* High-Switching Speed 100 Nanosecond Recovery Time
- \* Plastic Material used Carries Underwriters Laboratory Flammability Classification 94V-O

**HIGH EFFICIENCY  
RECTIFIERS**

**3.0 AMPERES  
600 -- 1000 VOLTS**

**DO-201AD**

### MAXIMUM RATINGS

Characteristic	Symbol	HER306	HER307	HER308	Unit
Peak Repetitive Reverse Voltage Working Peak Reverse Voltage DC Blocking Voltage	$V_{RRM}$ $V_{RWM}$ $V_R$	600	800	1000	V
RMS Reverse Voltage	$V_{R(RMS)}$	420	560	700	V
Average Rectifier Forward Current	$I_o$	3.0			A
Non-Repetitive Peak Surge Current ( Surge applied at rate load conditions halfwave, single phase, 60Hz )	$I_{FSM}$	50			A
Operating and Storage Junction Temperature Range	$T_J, T_{stg}$	- 65 to + 150			°C

DIM	MILLMETERS	
	MIN	MAX
A	5.00	5.60
B	25.40	---
C	8.50	9.50
D	1.20	1.30

### ELECTRICAL CHARACTERISTICS

Characteristic	Symbol	HER306	HER307	HER308	Unit
Maximum Instantaneous Forward Voltage ( $I_F=3.0$ Amp, $T_c = 25$ °C)	$V_F$	1.50		1.75	V
Maximum Instantaneous Reverse Current ( Rated DC Voltage, $T_c = 25$ °C) ( Rated DC Voltage, $T_c = 125$ °C)	$I_R$	5.0 70			uA
Reverse Recovery Time ( $I_F = 0.5$ A, $I_R = 1.0$ , $I_{rr} = 0.25$ A )	$T_{rr}$	100			ns
Typical Junction Capacitance ( Reverse Voltage of 4 volts & f=1 MHz)	$C_p$	25	20		pF

CASE---  
Transfer molded  
plastic

POLARITY---  
Cathode indicated  
polarity band

# HER306 Thru HER308

FIG-1 TYPICAL FORWARD CHARACTERISTICS

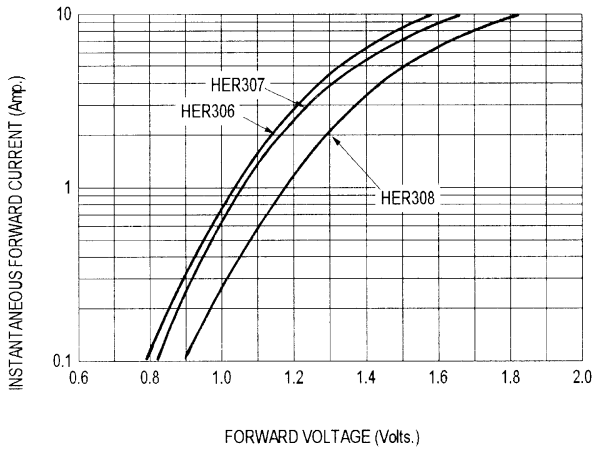


FIG-3 FORWARD CURRENT DERATING CURVE

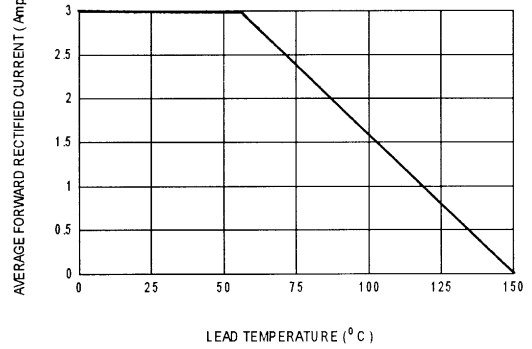


FIG-2 TYPICAL REVERSE CHARACTERISTICS

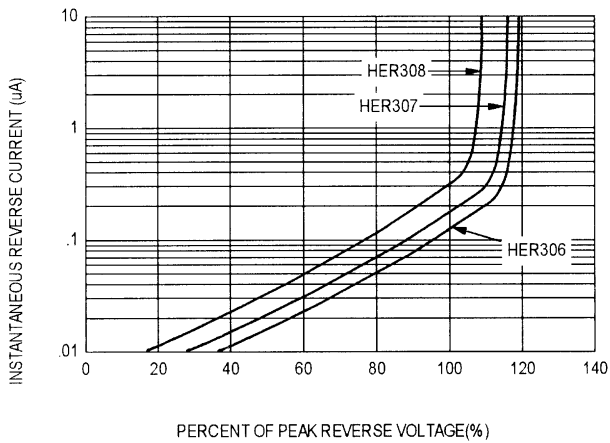


FIG-4 TYPICAL JUNCTION CAPACITANCE

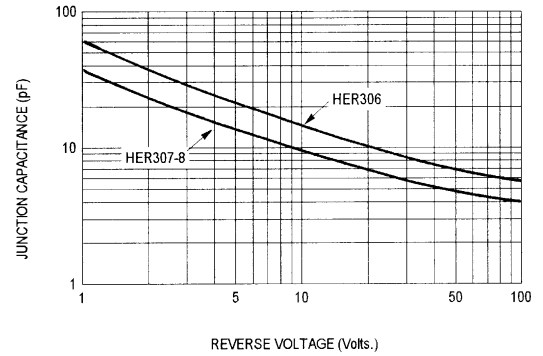
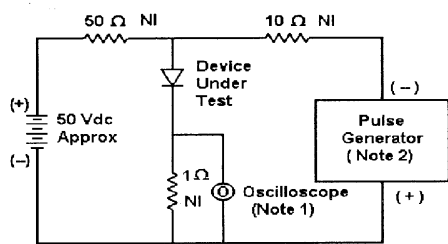
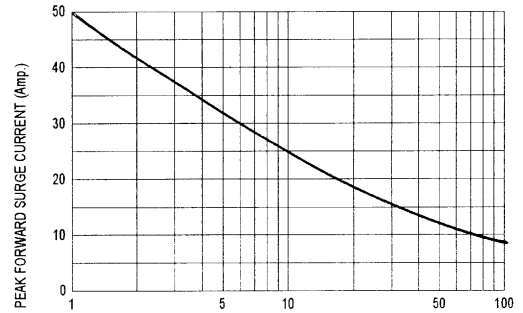
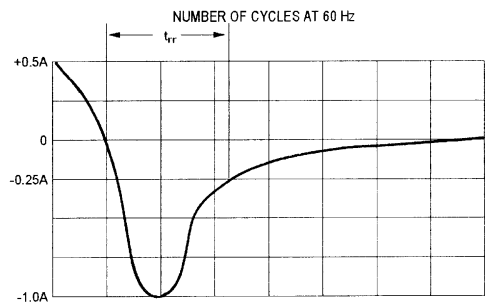


FIG-5 PEAK FORWARD SURGE CURRENT



Notes:  
 1. Rise Time = 7 ns max. Input Impedance = 1 M Ω, 22 pF  
 2. Rise Time = 10 ns max. Input Impedance = 50 Ω



Set time base for 20/50 ns/div

Fig-6 Reverse Recovery Time Characteristic and Test Circuit Diagram

## Notice

MOSPEC reserves the rights to make changes of the content herein the document anytime without notification. MOSPEC or anyone on its behalf, assumes no responsibility or liability for any errors or inaccuracies. Please refer to MOSPEC website for the last document.

MOSPEC disclaims any and all liability arising out of the application or use of any product including damages incidentally and consequentially incurred.

Application shown on the herein document are examples of standard use and operation. Customers are responsible for comprehending suitable use in particular applications. MOSPEC makes no representation or warranty that such application will be suitable for the specified use without further testing or modification.

The information contained herein is presented only as a guide for the applications of our products. No responsibility is assumed by MOSPEC for any infringements of patents or other rights of the third parties which may result from its use. No license is granted by implication or otherwise under any patent or patent rights of MOSPEC or others.

These MOSPEC products are intended for usage in general electronic equipment. Please make sure to consult with MOSPEC before you use these MOSPEC products in equipment which require specialized quality and/or reliability, and in equipment which could have major impact to the welfare of human life ( atomic energy control, aeronautics , traffic control, combustion control, safety devices etc.)